

Specifications

| LS75C Series               |  | 55LS75C  | 49LS75C   | 42LS75C   |
|----------------------------|--|--|---|---|
| PANEL                      | Screen Size  | 55"  | 49"   | 42"   |
|                            | Panel Technology                                   | IPS  | IPS   | IPS   |
|                            | Aspect Ratio                                       | 16:9   | 16:9  | 16:9  |
|                            | Native Resolution                                  | 1,920 x 1,080 (FHD)  | 1,920 x 1,080 (FHD)   | 1,920 x 1,080 (FHD)   |
|                            | Brightness   | 700 cd/m <sup>2</sup>  | 700 cd/m <sup>2</sup>   | 700 cd/m <sup>2</sup>   |
|                            | Contrast Ratio                                     | 1,300:1  | 1,300:1   | 1,300:1   |
|                            | Viewing Angle (H x V)                              | 178 x 178  | 178 x 178   | 178 x 178   |
|                            | Response Time                                      | 8ms (G to G BW) typ.   | 8ms (G to G BW) typ.  | 8ms (G to G BW) typ.  |
|                            | Surface Treatment                                  | Hard Coating (3H), Anti-glare Treatment of the Front Polarizer (Haze 10%)  | Hard Coating (3H), Anti-glare Treatment of the Front Polarizer (Haze 10%) | Hard Coating (3H), Anti-glare Treatment of the Front Polarizer (Haze 10%) |
|                            | Guaranteed Operation Hours                         | 24 Hrs   | 24 Hrs  | 24 Hrs  |
| CONNECTIVITY               | Orientation  | Portrait & Landscape   | Portrait & Landscape  | Portrait & Landscape  |
|                            | Input  | HDMI (2), DP, DVI-D, Audio In, OPS, USB 3.0  |   |   |
|                            | Output   | DP, External Speaker Out   |   |   |
|                            | External Control                                   | RS232C In/out, RJ45 In, IR/Light Sensor In, Pixel Sensor In  |   |   |
| PHYSICAL SPECIFICATION     | Bezel Color  | Black  | Black   | Black   |
|                            | Bezel Width  | 7.4 mm (T/L/R/B Even)  | 7.4 mm (T/L/R/B Even)   | 7.4 mm (T/L/R/B Even)   |
|                            | Monitor Dimension (W x H x D)                      | 1,230 x 714 x 32 mm  | 1,095 x 637 x 32 mm   | 949 x 555 x 32 mm   |
|                            | Weight (Head)                                      | 20.7 kg  | 15.6 kg   | 12.5kg  |
|                            | Monitor with Optional Stand Dimensions (W x H x D) | 1,230 x 776 x 298 mm   | 1,095 x 700 x 298 mm  | 949 x 618 x 298 mm  |
|                            | Weight (Head+Stand)                                | 22.1 kg  | 17.0 kg   | 13.9 kg   |
|                            | Carton Dimensions (W x H x D)                      | 1,330 x 815 x 174 mm   | 1,197 x 760 x 134 mm  | 1,045 x 645 x 127 mm  |
|                            | Packed Weight                                      | 25.2 kg  | 18.7 kg   | 14.8 kg   |
|                            | VESA™ Standard Mount Interface                     | 400 x 400 mm   | 400 x 400 mm  | 400 x 400 mm  |
|                            | SPECIAL FEATURES                                   | Temperature Sensor, Auto Brightness Sensor, Tile Mode (up to 15x15), Wake on LAN, DPM Select, DPM Wake Up, Energy Saving, Smart Energy Saving, File Play with USB, PIP/PBP (2), Internal Memory 16GB (System 4GB + Available 12GB), Wi-Fi Dongle Ready (802.11n), USB Cloning, Fail Over |   |   |
| ENVIRONMENTAL CONDITIONS   | Operating Temperature                              | 0°C to 40°C  | 0°C to 40°C   | 0°C to 40°C   |
|                            | Operating Humidity                                 | 10% to 80%   | 10% to 80%  | 10% to 80%  |
| POWER                      | Power Supply                                       | 100-240V~, 50/60Hz   | 100-240V~, 50/60Hz  | 100-240V~, 50/60Hz  |
|                            | Power Type   | Built-In Power   | Built-In Power  | Built-In Power  |
|                            | Power Typ.   | 140 W  | 125 W   | 110 W   |
|                            | Consumption Smart Energy Saving                    | 100 W  | 90 W  | 80 W  |
| STANDARD (CERTIFICATION)   | Safety   | UL / cUL / CB / TUV / KC   | UL / cUL / CB / TUV / KC  | UL / cUL / CB / TUV / KC  |
|                            | EMC  | FCC Class "A" / CE / KCC   | FCC Class "A" / CE / KCC  | FCC Class "A" / CE / KCC  |
| MEDIA PLAYER COMPATIBILITY | ErP / Energy Star                                  | NA / No  | NA / No   | NA / No   |
|                            | OPS Type Compatible                                | Yes  | Yes   | Yes   |
| SOFTWARE COMPATIBILITY     | External Media Player Attachable                   | Yes (MP500 / MP700)  | Yes (MP500 / MP700)   | Yes (MP500 / MP700)   |
|                            | Content Management Software                        | SuperSign Premium  | SuperSign Premium   | SuperSign Premium   |
| ACCESSORIES                | Control and Monitoring Software                    | SuperSign C  | SuperSign C   | SuperSign C   |
|                            | Basic  | Remote Controller (2ea batteries included), Power Cord, IR / Light Sensor Receiver, QSG, Regular Book, HDMI cable  |   |   |
|                            | Optional   | External Speaker (SP-2100), ST-200T, LSW440S, Wi-Fi USB Dongle (AN-WF500), OPS Kits (KT-OPSA), Pixel Sensor (KT-SP0)   |   |   |

Connectivity

- 1 SPEAKER OUT

2 AUDIO IN

3 LAN

4 PIXEL SENSOR

5 HDMI

6 IR & LIGHT SENSOR
- 7 DP IN

8 DP OUT

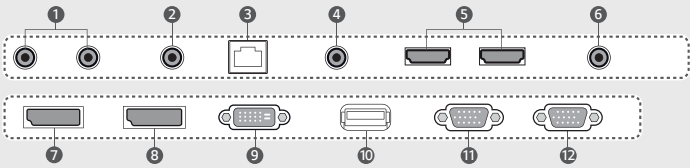
9 DVI-D IN

10 USB 3.0

11 RS232C IN

12 RS232C OUT

55LS75C, 49LS75C, 42LS75C



Download LG Commercial Display Mobile App



Learn more [www.lg.com/b2b](http://www.lg.com/b2b)  
**You**Tube [youtube.com/c/LGCommercialDisplay](https://youtube.com/c/LGCommercialDisplay)

LG may make changes to specifications and product descriptions without notice.  
Copyright © 2017 LG Electronics Inc. All rights reserved. "LG Life's Good" is a registered trademark of LG Corp.  
The names of products and brands mentioned here may be the trademarks of their respective owners.



Smart Platform with a Powerful Embedded System-on-Chip  
Standard Premium LS75C Series



The LS75C Series, webOS signage, allows for customized apps that are easy to create using LG's Software Development Kit. The high-performance SoC reduces the total cost of ownership and simplify installation, allowing you to manage content more conveniently.  
The LS75C series strengthens capability in supporting various network-based protocols.

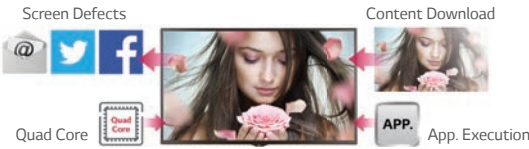
Key Features

Smart Platform



Quad Core SoC\*

The high-performance SoC can execute several tasks at the same time and provides smooth content playback.



\*System-on-Chip

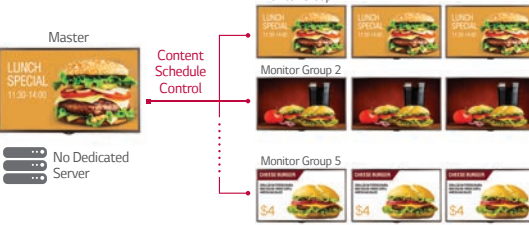
webOS<sup>3.0</sup>

The webOS 3.0 platform provides powerful and convenient creation tools, including app development materials.



Group Manager

Content can be created, distributed and controlled by a signage without a dedicated PC or server.



PBP (Picture-By-Picture) / PIP (Picture-In-Picture)

PBP (Picture-By-Picture) and PIP (Picture-In-Picture) features enable you to compose various layouts for several digital devices.



# Smart Platform with a Powerful Embedded System-on-Chip

## Standard Premium LS75C Series



### Screen Sizes

55", 49", 42"

### LS75C Series

- Brightness: 700 cd/m<sup>2</sup>
- Bezel: 7.4 mm Even Bezel
- Depth: 32 mm
- Interface: HDMI (2), DVI-D, DP, RGB, RJ45, IR / Light Sensor, RS232C, Pixel Sensor, USB 3.0, Audio

## Key Features

### Support Network Protocol

#### IP Streaming Protocol

Various types of IP video streaming protocol are supported, such as RTSP/RTP, MMS, HLS and MPEG-2 TS\*.



\*RTSP (Real-Time Streaming Protocol), RTP (Real-time Transport Protocol), MMS (Microsoft Media Server), HLS (http live streaming)

#### Secure Communication Protocol

By supporting HTTPS\* protocol, communication between server and signage is more secure.



\*HTTPS: Hypertext Transfer Protocol over Secure Socket Layer

#### Proxy Server

Web access speed and security can be improved by supporting Proxy Server (A server that acts as an intermediary for requests from clients seeking resources from other servers.)



### Wireless Solution

#### Mirroring

Content sharing is more convenient on a Wi-Fi network.



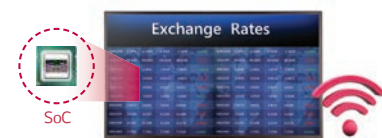
#### SoftAP

The LS75C with SoftAP software can operate as a wireless access point for mobile devices.



#### Simple Installation

Installation has been simplified by removing the external media player and Ethernet/RS232C cables.



Wi-Fi (removing Ethernet or RS232C cables)  
802.11n (2.4 GHz / 5 GHz)

### Supportive Convenience

#### BEACON

With BEACON and Bluetooth Low Energy (BLE) supported by LS75C\*, retail stores can provide coupons and information in real time. When Wi-Fi dongle is connected, the BEACON is available.

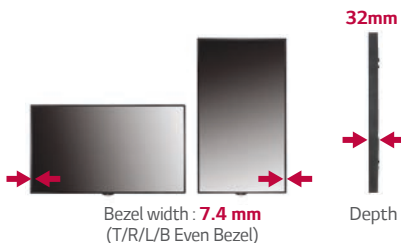


\* LS75C is enhanced to support iBeacon\*\* and Eddystone\*\*\*  
\*\* iBeacon: Bluetooth Low Energy beacon profile released by Apple in 2013  
\*\*\* Eddystone: Bluetooth Low Energy beacon profile released by Google in 2015

### Industrial Design

#### Slimmer Even Bezel & Depth

The thinner bezel & depth allows a perfect fit for a sleek look.



#### Detachable Logo

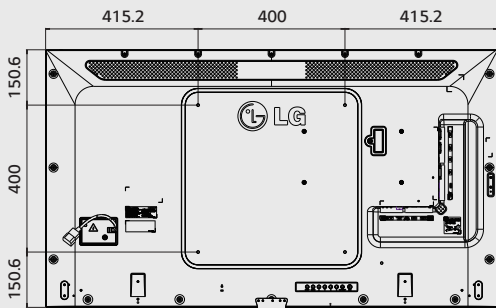
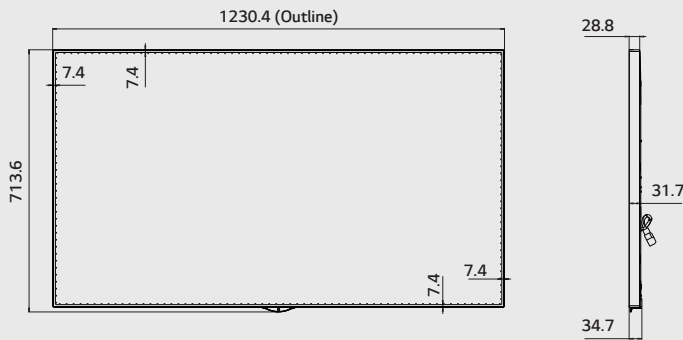
Portrait mode allows the logo to be positioned in the desired setting.



### Dimensions (unit: mm)

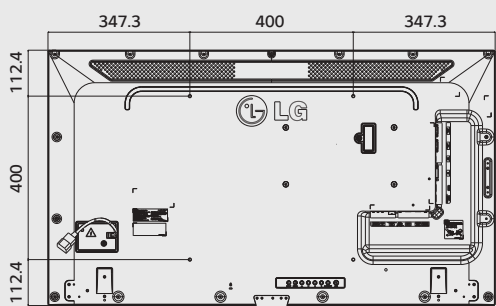
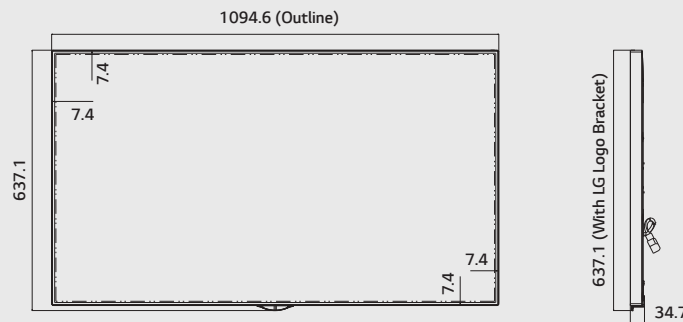
#### 55"

1,230 x 714 x 32 / 20.7 kg



#### 49"

1,095 x 637 x 32 / 15.6 kg



#### 42"

949 x 555 x 32 / 12.5 kg

