

Specifications

		55VH7B	55VM5B-A	49VH7C	49VM5C-A
PANEL	Screen Size	55"	55"	49"	49"
	Panel Technology	IPS			
	Aspect Ratio	16 : 9			
	Native Resolution	1,920 x 1,080 (FHD)			
	Brightness	700 cd/m ²	500 cd/m ²	700 cd/m ²	500 cd/m ²
	Contrast Ratio	1,400:1	1,400:1	1,300:1	1,300:1
	Dynamic CR	500,000:1			
	Viewing Angle (H x V)	178 x 178			
	Response Time	8ms (G to G)			
	Surface Treatment	55VH7B-A: Hard coating (2H), Anti-glare low reflection treatment of the front polarizer (Haze 3% (Typ)) 55VH7B-H : Hard coating (3H), Anti-glare treatment of the front polarizer (Haze 44 %)	Hard coating (2H), Anti-glare low reflection treatment of the front polarizer (Haze 3% (Typ))	Hard coating (2H), Anti-glare low reflection treatment of the front polarizer (Haze 3 % (Typ))	Hard coating (2H), Anti-glare low reflection treatment of the front polarizer (Haze 3% (Typ))
CONNECTIVITY	Guranteed Operating Hour	24 Hours			
	Orientation	Portrait & Landscape			
	Input	HDMI, DP, DVI-D, OPS, Audio, USB 2.0, USB 3.0, RGB			
	Output	DP, Audio			
PHYSICAL SPECIFICATION	External Control	RS232C, RJ45, IR Receiver			
	Bezel Color	-			
	Bezel Width	0.9 mm (Top/Bottom/Left/Right even bezel) / 1.8 mm *B to B : Panel Bezel + Panel Bezel			
	Monitor Dimension (W x H x D)	1,211.4 x 682.2 x 86.5 mm	1,211.4 x 682.2 x 86.5 mm	1,075.6 x 605.8 x 86.2 mm	1,075.6 x 605.8 x 86.2 mm
	Weight (Head)	18.6 kg	18.6 kg	17.5 kg	17.5 kg
	Carton Dimensions (W x H x D)	1,353 x 855 x 263 mm	1,353 x 855 x 263 mm	1,214 x 775 x 263 mm	1,214 x 775 x 263 mm
	Packed Weight	25.3 kg	25.3 kg	23.2 kg	23.2 kg
SPECIAL FEATURES	VESA™ Standard Mount Interface	600 x 400 mm			
		Temperature Sensor, Tile Mode (up to 15 x 15), Natural Mode@Tile Mode, Energy Saving, Smart Energy Saving, File Play with USB, Internal Memory (8 GB, System 4 GB + Available 4 GB), Wi-Fi Dongle Ready, USB Cloning, Content Scheduling, Fail over (USB, RGB, DVI, HDMI, Internal Memory)			
ENVIRONMENTAL CONDITIONS	Operating Temperature Range	0 °C to 40 °C			
	Operating Humidity Range	10 % to 80 %			
POWER	Power Supply	100-240V~, 50/60Hz			
	Power Type	Built-In Power			
POWER CONSUMPTION	Typ.	220 W	150 W	150 W	120 W
	Smart Energy Saving	110 W	80 W	80 W	70 W
STANDARD (CERTIFICATION)	Safety	UL / cUL / CB / TUV / KC			
	EMC	FCC Class "A" / CE / KCC			
	ErP / Energy Star	NA / Yes (Energy Star 7.0)			
MEDIA PLAYER COMPATIBILITY	OPS Type Compatible	Yes			
	External Media Player Attachable	Yes (MP500/MP700)			
SOFTWARE COMPATIBILITY	Content Management Software	SuperSign W			
	Control and Monitoring Software	SuperSign C			
ACCESSORIES	Basic	Remote controller, Power cable, DP cable, Manual, IR receiver, RS-232C cable, LAN cable, Guide bracket, Screws			
	Optional	Wall mount (Landscape: WM-L640V, Portrait: WM-P640V), OPS kit (KT-OPSA), HDBaseT (EB-B100)			

Connectivity

- 1 IR IN

2 RS-232C IN

3 RS-232C OUT

4 HDMI IN

5 DVI-D IN

6 DP IN

7 DP OUT

8 USB 2.0 IN

9 USB 3.0 IN

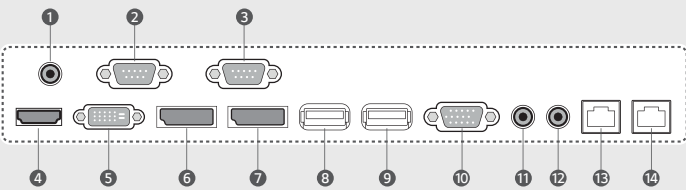
10 RGB/COMPONENT/AV IN

11 AUDIO IN

12 AUDIO OUT

13 LAN IN

14 LAN OUT



Download LG Commercial Display Mobile App



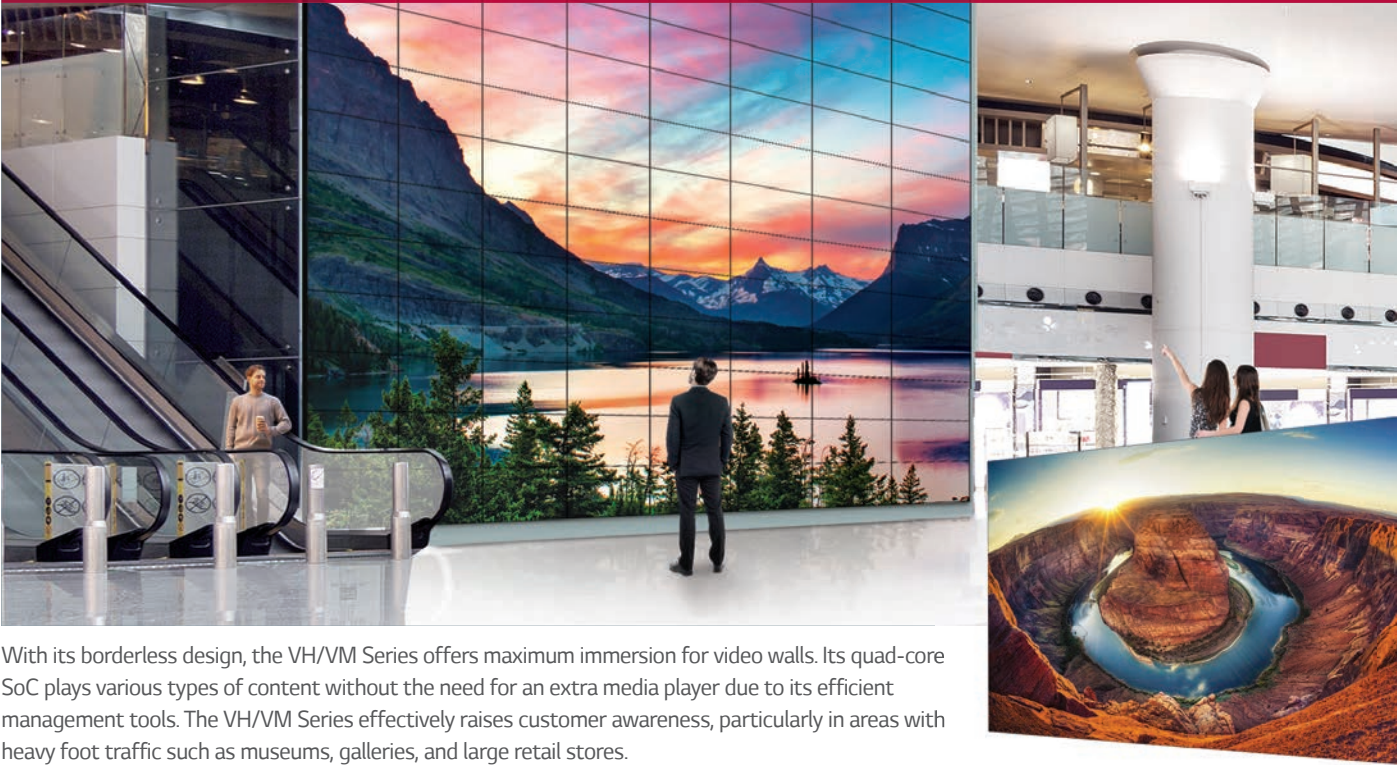
Learn more www.lg.com/b2b

You [youtube.com/c/LGECCommercialDisplay](https://www.youtube.com/c/LGECCommercialDisplay)

LG may make changes to specifications and product descriptions without notice.
Copyright © 2017 LG Electronics Inc. All rights reserved. "LG Life's Good" is a registered trademark of LG Corp.
The names of products and brands mentioned here may be the trademarks of their respective owners.



Artistic Immersion, Overwhelming Attractiveness
World Best Class Video Wall VH/VM Series



With its borderless design, the VH/VM Series offers maximum immersion for video walls. Its quad-core SoC plays various types of content without the need for an extra media player due to its efficient management tools. The VH/VM Series effectively raises customer awareness, particularly in areas with heavy foot traffic such as museums, galleries, and large retail stores.

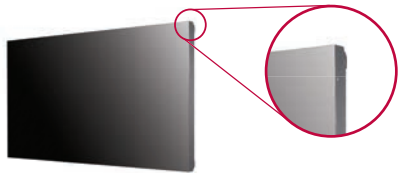
Key Features

Borderless Design



Narrow Bezel

Borderless design with its 0.9 mm even panel bezel* and 1.8 mm BtB (Bezel to Bezel)** size, verified by Nemko***, enables immersive and seamless viewing experiences on assembled video wall screens.



*Panel Bezel:
The black matrix section where an image is not displayed on the front panel.
**BtB (Bezel to Bezel):
Panel Bezel + Panel Bezel (Borderless type, no metal bezel)
***Nemko (Nogerois Elektriske Materieelkontroll) was established in 1933 as an institution for mandatory safety testing and national approval of electrical equipment to be marketed and sold in Norway. Since it was transformed into independent, self-owned foundation in 1991, it has provided worldwide testing and certification.



Smart Platform



Built-in SoC* and Synced Playback

The optimized built-in quad-core SoC in the VH/VM Series can play various content formats and eliminates the need for an external media player. Using its built-in SoC, each display plays its video tile without lag for synchronized content playback.



*System-on-Chip

- CPU
1.2 GHz Quad Core CPU
- Memory
2.5 GB double data 3 (DDR3) 32 bit memory
- GPU
550MHz video processor with full codec (WMV, MP4, HEVC, VP9, and H.264 capabilities)
- Internal Memory
A storage of 8 GB (4 GB is occupied by system)

webOS 2.0

The webOS platform provides easy and convenient tools to create contents. LG's SDK* and technical supports make content development and management easier.



<http://developer.lge.com/webOSSignage>

*Software Development Kit



Artistic Immersion, Overwhelming Attractiveness

World Best Class Video Wall VH/VM Series



Screen Size
49", 55"



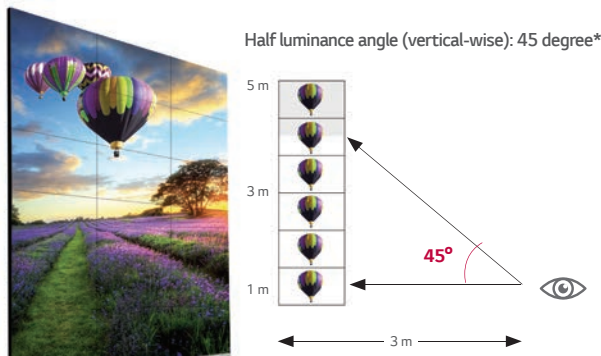
- 55VH7B/55VM5B-A, 49VH7C/49VM5C-A**
- Brightness: VH Series: 700 cd/m², VM Series: 500 cd/m²
 - Surface Treatment:
 - 55VH7B-A: Hard coating (2H), Anti-glare low reflection treatment of the front polarizer (Haze 3% (Typ))
 - 55VH7B-H: Hard coating(3H), Anti-glare treatment of the front polarizer (Haze 44 %)
 - 55VM5B-A: Hard coating (2H), Anti-glare low reflection treatment of the front polarizer (Haze 3% (Typ))
 - 49VH7C: Hard coating (2H), Anti-glare low reflection treatment of the front polarizer (Haze 3 % (Typ))
 - 49VM5C-A: Hard coating (2H), Anti-glare low reflection treatment of the front polarizer (Haze 3 % (Typ))
 - Bezel: 0.9 mm (T/B/L/R even bezel)
 - Depth: 55": 86.5 mm, 49": 86.2 mm
 - Interface: HDMI / DVI / RGB / IR, Daisy-chain (DP, RS232C, RJ45)

Key Features

Superior Picture Quality

Clear Viewing Angle

The VH/VM Series ensures clear picture quality even when installed in stacks of more than four. This is very favorable for the quantity of video walls installed in large spaces.



*The angle from the center of the screen to have 50 % of the initial luminance.

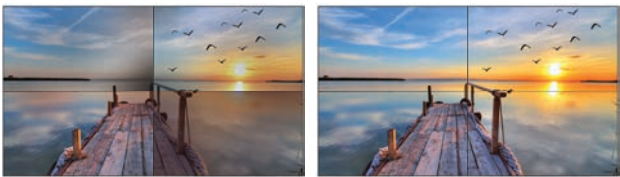
Uniform Brightness

LG's LED backlight technology guarantees high uniformity in brightness to ensure a clear picture. On other screens, certain spots may appear darker than others, but the VH/VM Series generates high visibility and a consistent brightness across the whole screen.



Video Wall Image Creation

Through Video Wall Image Creation (VIC) technology, color and brightness differences are compensated in circuit part with an algorithm to make the panels into a same characteristic so that each video wall maintains the consistent white balance.

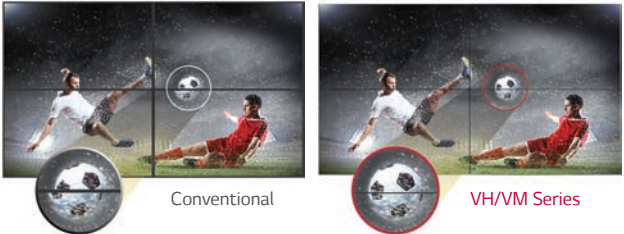


Conventional

VH/VM Series

Image Gap Reduction

The VH/VM Series includes an image improvement algorithm that can adjust to objects located in the boundary of bezel for a seamless viewing experience.



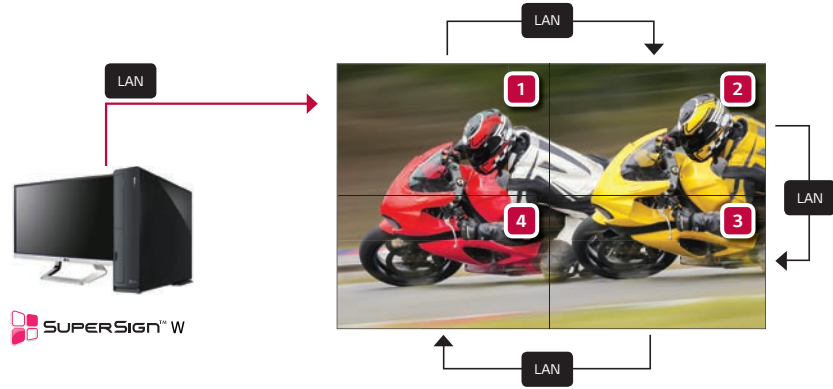
Conventional

VH/VM Series

Enhanced Content Management

LAN Daisy Chain Performance

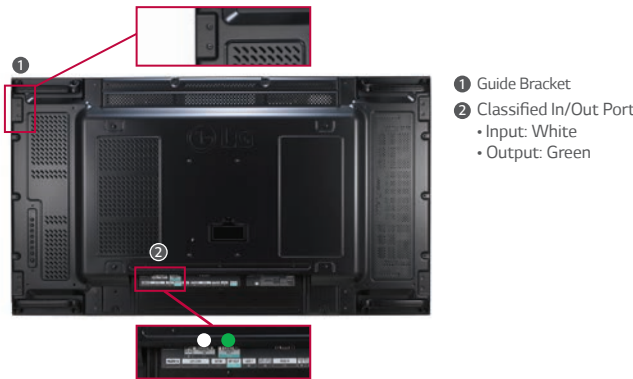
A LAN daisy chain allows you to execute commands to control and monitor the screens and even update their firmware.



Convenient Options

Guide Bracket / Classified Port

A guide bracket is an attachment that ensures the video wall remains flat. The classified in/out port prevents errors when connecting a daisy chain.



Control Buttons

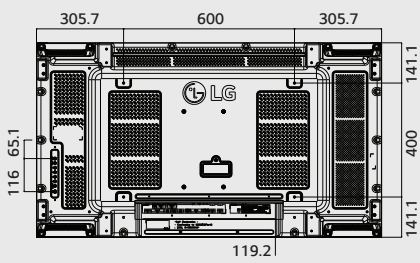
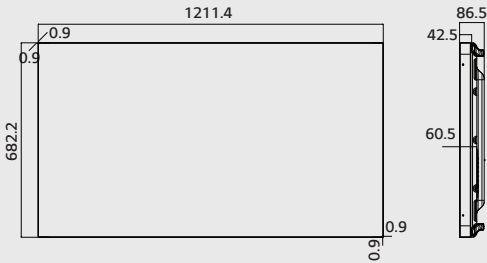
With 8 control buttons, it's easy to operate various functions of the VH/VM Series, such as controlling the OSD (On Screen Display) and changing the input source.



Dimension (unit : mm)

55"

1,211.4 x 682.2 x 86.5 mm /
18.6 kg



49"

1,075.6 x 605.8 x 86.2 mm /
17.5 kg

