

Ultra HD Large Display

UM3C Series

The Ultra HD large format, UM3C series delivers the content in fine detail with vivid and lifelike colors without any distortion. Powered by webOS platform, it maximizes user convenience by allowing multi screen in a single display with up to 4 input sources and the USB content playing and scheduling. Also, the reliable compatibility with AV control systems totally improves the business productivity in meeting rooms.



Key Points

- Outstanding Ultra HD content playback with embedded HEVC decoder
- Maximum usability supported by multi screen layouts and USB content playback
- Compatibility with meeting room solution for seamless integrated control
- Multi-task execution and easy UI based on high-performance of webOS smart platform
- Slim depth and even bezel for sleek look and easy installation

Ultra HD Large Display

UM3C Series

Key Features

Outstanding Picture Quality

ULTRA HD

Ultra HD Resolution

Ultra HD large screen delivers immersive viewing experience by 4 times higher definition picture quality than FHD, which enables to describe fine details without distortion. Especially UM3C series ensures stable UHD video playback by supporting HEVC* that offers double data compression ratio at the same level of video quality compared to the conventional H.264.

*HEVC: High Efficiency Video Coding



Supportive Convenience

Multiple screen by PBP/PIP

PBP (Picture-By-Picture) features multi screen in a single display with upto 4 input sources, thus maximizing the usability of large UHD display. In addition, PIP (Picture-In-Picture) supports playing both main screen and sub screen at the same time with various layouts, so that users can arrange many different usage scenarios efficiently.



PBP - Landscape



PIP

USB Contents Playback and Scheduling

Contents can be simply played and scheduled via USB, so additional server connection is not required, enabling easy content management.



Wireless Solution

UM3C series supports wireless services for more optimized user experience with built-in Wi-Fi(802.11n). Mirroring supports sharing contents among devices on a Wi-Fi network and Soft AP makes the display operate as a wireless access point for other digital devices.



Highly Reliable Compatibility

Compatibility for Meeting Room

UM3C series ensures secured compatibility with AV control Systems for seamless integration and automated control in meeting rooms, boosting business management efficiency.



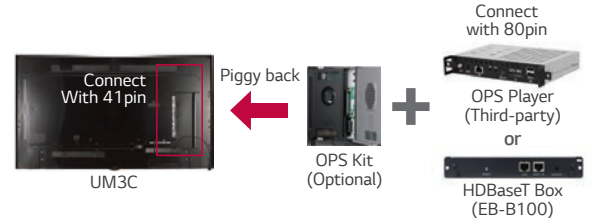
Ultra HD Large Display

UM3C Series

Highly Reliable Compatibility

OPS / HDBaseT Connectivity

The UM3C provides an OPS (Open Pluggable Specification) Kit to connect a third-party OPS player or HDBaseT box. Users have the flexibility to choose any media player as long as it complies with the OPS.



Smart Platform



High-Performance SoC with webOS

Quad Core SoC* can execute several tasks at the same time without a separate media player, saving TCO. Due to its internal memory (8GB), pre-loaded contents are displayed without external inputs. In addition, webOS platform enhances user convenience with intuitive UI and simple app development tools.

*System on Chip



Sleek Design



Slim Depth & Even Bezel

The slim depth and even bezel allows an easy installation and a perfect fit for a sleek look.



Bezel

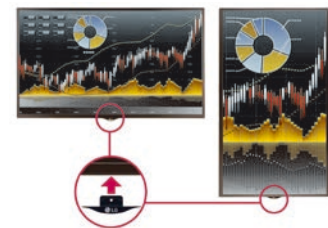


Depth

*based on 75UM3C model

Detachable Logo

The detachable logo allows for installation in the desired orientation in landscape or portrait mode.



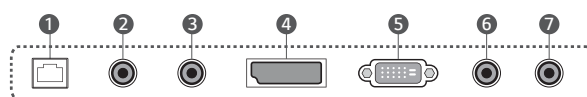
*86UM3C only supports landscape mode.

Connectivity

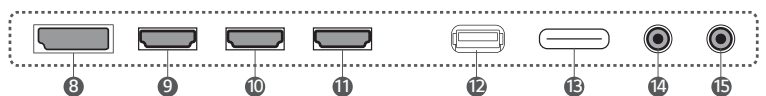
- | | |
|---------------------|----------------|
| 1 LAN | 9 HDMI IN 3 |
| 2 AUDIO IN | 10 HDMI IN 2 |
| 3 AUDIO OUT | 11 HDMI IN 1 |
| 4 DP OUT | 12 USB 3.0 IN |
| 5 DVI-D IN | 13 SD CARD |
| 6 PIXEL SENSOR | 14 RS-232C IN |
| 7 IR & LIGHT SENSOR | 15 RS-232C OUT |
| 8 DP IN | |

86UM3C

Bottom

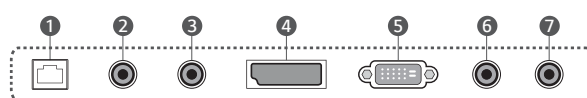


Side

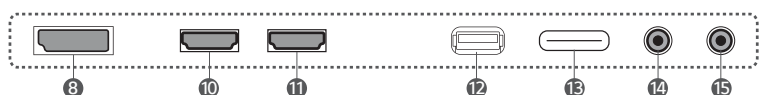


75UM3C

Bottom



Side



Specifications

UM3C Series

		86UM3C	75UM3C
PANEL	Screen Size	86"	75"
	Panel Technology	IPS	IPS
	Aspect Ratio	16 : 9	16 : 9
	Native Resolution	3,840 x 2,160 (UHD)	3,840 x 2,160 (UHD)
	Brightness	350cd/m ²	350cd/m ²
	Contrast Ratio	1,200:1	1,200:1
	Dynamic CR	500,000:1	2,000,000:1 (DTV Label only)
	Viewing Angle (H x V)	178 x 178	178 x 178
	Response Time	8ms (G to G)	6ms (G to G)
	Surface Treatment	Low Haze 3%	Low Haze 3%
	Life time (Min.)	30,000 Hrs	50,000 Hrs
CONNECTIVITY	Guaranteed Operation Hours	16 Hrs	24 Hrs
	Orientation	Landscape	Portrait & Landscape
	Input	HDMI(3), DP, DVI-D, Audio, USB 3.0, SD Card	HDMI(2), DP, DVI-D, Audio, USB 3.0, SD Card
	Output	DP, Audio	DP, Audio
PHYSICAL SPECIFICATION	External Control	RS232C, RJ45, IR Receiver, Pixel Sensor	RS232C, RJ45, IR Receiver, Pixel Sensor
	Bezel Color	Black	Black
	Bezel Width	On: 15.6mm, Off: 14.3mm	On: 15.8mm, Off: 14.9mm
	Monitor Dimension (W x H x D)	1,926.2 x 1,097.2 x 60.6mm (without logo / handle)	1,682.37 x 960.3 x 57.9mm (without logo / handle)
	Weight (Head)	49kg	41.5kg
	Carton Dimensions (W x H x D)	2,073 x 1,260 x 292mm	1,816 x 1,123 x 228mm
	Packed Weight	61.1kg	49kg
	VESA™ Standard Mount Interface	600 x 400mm	600 x 400mm
SPECIAL FEATURES		Temperature Sensor, Auto Brightness Sensor, Tile Mode (up to 15x15), Natural Mode@Tile Mode, ISM Method, Internal Memory (8GB, System 4GB), Wi-Fi built-in (802.11n), USB Cloning, Content Scheduling, Sync mode, PM mode, Fail Over, Wake on LAN, BEACON (On/Off), Embedded Template, PIP/PBP (2/3/4)	
ENVIRONMENT CONDITIONS	Operation Temperature Range	0 °C to 40 °C	0 °C to 40 °C
	Operation Humidity Range	10 % to 80 %	10 % to 80 %
POWER	Power Supply	100-240V~, 50/60Hz	100-240V~, 50/60Hz
	Power Type	Built-In Power	Built-In Power
	Power Consumption Typ.	315W	160W
	Power Consumption Smart Energy Saving	220W	115W
STANDARD (CERTIFICATION)	Safety	UL / cUL / CB / TUV / KC	UL / cUL / CB / TUV / KC
	EMC	FCC Class "A" / CE / KCC	FCC Class "A" / CE / KCC
	ErP / Energy Star	No / No	No / No
MEDIA PLAYER COMPATIBILITY	OPS type compatible	Yes	Yes
	External Media player Attachable	Yes (MP500 / MP700)	Yes (MP500/MP700)
SOFTWARE COMPATIBILITY	Content Management Software	SuperSign W	SuperSign W
	Control and Monitoring Software	SuperSign C	SuperSign C
ACCESSORIES	Basic	Remote Controller (include battery 2ea), Power Cord, QSG, DP cable (2.6M), Regulation Book, Phone to RS232C Gender, Memory Cover	Remote Controller (include 2ea batteries), Power Cord, QSG, DP Cable (1.8M), Regulation Book, Phone to RS232C Gender, Memory Cover
	Optional	Pixel Sensor (KT-SP0), Media Player, OPS Kit (KT-OPSA), HDBaseT (EB-B100), LSW640A/B(Wall Mount)	Pixel sensor (KT-SP0), Media player, OPS Kit (KT-OPSA), HDBaseT (EB-B100)

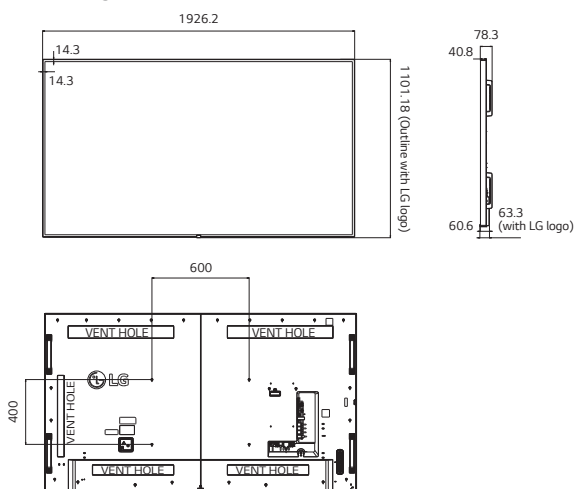
Dimension (unit : mm)

86"

1,926.2 x 1,101.2* x 63.3*mm / 49kg (Without handle)

1,926.2 x 1,101.2* x 78.3*mm (With handle)

*With LG logo

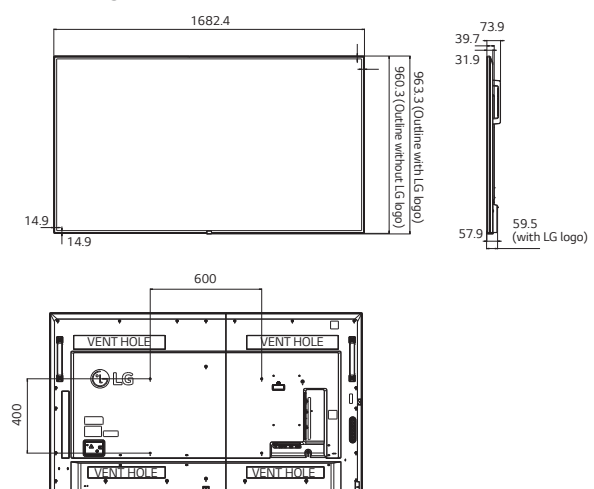


75"

1682.4 x 963.3* x 59.5*mm / 41.5kg (Without Handle)

1682.4 x 963.3* x 73.9*mm (With Handle)

* With LG logo



Download LG Commercial Display Mobile App



www.lg.com/b2b
[youtube.com/c/LGCommercialDisplay](https://www.youtube.com/c/LGCommercialDisplay)
<https://www.facebook.com/LGInformationDisplay/>
<https://www.linkedin.com/company/16235211/>

LG may make changes to specifications and product descriptions without notice.
Copyright © 2017 LG Electronics Inc. All rights reserved. "LG Life's Good" is a registered trademark of LG Corp.
The names of products and brands mentioned here may be the trademarks of their respective owners.

