



Internal Use Only

<http://biz.lgservice.com>

# Multi Air Conditioner SVC MANUAL(Exploded View)

**MODEL : A5UW306FA5  
UHXM90MA0[U40]**

## **CAUTION**

Before Servicing the unit, read the safety precautions in General SVC manual.  
Only for authorized service personnel.

# 1. Specification

Outdoor Unit			A5UW306FA5 / UHXM90MA0[U40]
Nominal Capacity (Min~Rated~Max)	Cooling	kW	1.85~8.80~10.55
		Btu/h	6,300~30,000~36,000
	Heating	kW	2.22~10.1~12.1
		Btu/h	7,560~34,500~41,400
Nominal Input (Min~Rated~Max)	Cooling	kW	0.72~2.31~3.16
	Heating	kW	0.88~2.19~3.87
Energy label			A/A
Testing Combination			MS07AH X 5EA
Running Current	Cooling	A	3.1~10.1~13.7
	Heating	A	3.8~9.6~16.8
Starting Current	(Cooling/Heating)	A	-
Power Supply		Ø / V / Hz	1 / 220~240 / 50
Power Supply Cable (outdoor)		No.x mm <sup>2</sup>	3 X 2.5
Power and transmission cable (outdoor to indoor)		No.x mm <sup>2</sup>	4 x 0.75 (Including Earth)
Dimensions	W*H*D	mm(inch)	950X834X330(37.4X32.8X13.0)
Net Weight		kg(lbs)	67(147.7)
Max. Number of Connectable Indoor Units			5
Compressor (Inverter)	Type		Twin-Rotary
	Qty x Model		GJT240D
	Motor Type		BLDC
	Oil Charge volume	cc	900
	Oil Type		FVC68D
Refrigerant	Charge (at 7.5m)	g(oz)	3,300(116.4)
	Type		R410A
	Control		EEV
Heat Exchanger	Rows x Column x FPI		2RX38CX16
Defrosting Method			Reversing cycle
Fan	Capacitor	µF/Vac	-
	Drive		DC
	Discharge direction	Side / Top	Side
	Air Flow Rate	CMM(CFM)	53 (1872)
Noise Level(H)	Sound Pressure at 1m	dB(A)±3	53
Piping connections	Liquid(Ø)	mm(inch)	6.35 (1/4) X 5EA
	Gas(Ø)	mm(inch)	9.52 (3/8) X 5EA
Max. Interunit Piping Length	Total of Each Room	m	75
	For One Room	m	25
Max. Elevation	Indoor Unit~Outdoor Unit	m	15
	Indoor Unit~Indoor Unit	m	7.5

## Note:

### 1. Capacities are based on the following conditions:

- Cooling: - Indoor Temperature 27°C(80.6°F) DB/19°C(66.2°F) WB
- Outdoor Temperature 35°C(95°F) DB/24°C(75.2°F) WB
- Heating: - Indoor Temperature 20°C(68°F) DB/15°C(59°F) WB
- Outdoor Temperature 7°C(44.6°F) DB/6°C(42.8°F) WB
- Piping Length - Interconnecting Piping Length 7.5m
- Level Difference of Zero

- 2. Wiring cable size must comply with the applicable local and national code.
- 3. The specification may be subject to change without prior notice for purpose of improvement.

## 2. Function Table

Category	Function	A5UW306FA5 / UHXM90MA0[U40]
Reliability	Defrost / Deicing	○
	High pressure switch	X
	Low pressure switch	○
	Phase protection	X
	Restart delay (3-minutes)	○
	Self diagnosis	○
	Soft start	○
	Test function	○
Convenience	Auto operation(Artificial intelligence)	○
	Auto restart operation	○
CAC network function	Network solution(LGAP)	○
	PDI(Power Distribution Indicator)	PQNUD1S00
	PI485	PMNFP14A0
Special function kit	Low ambient operation	○ (Program logic)
Others	Thermistor	-

**Note :**

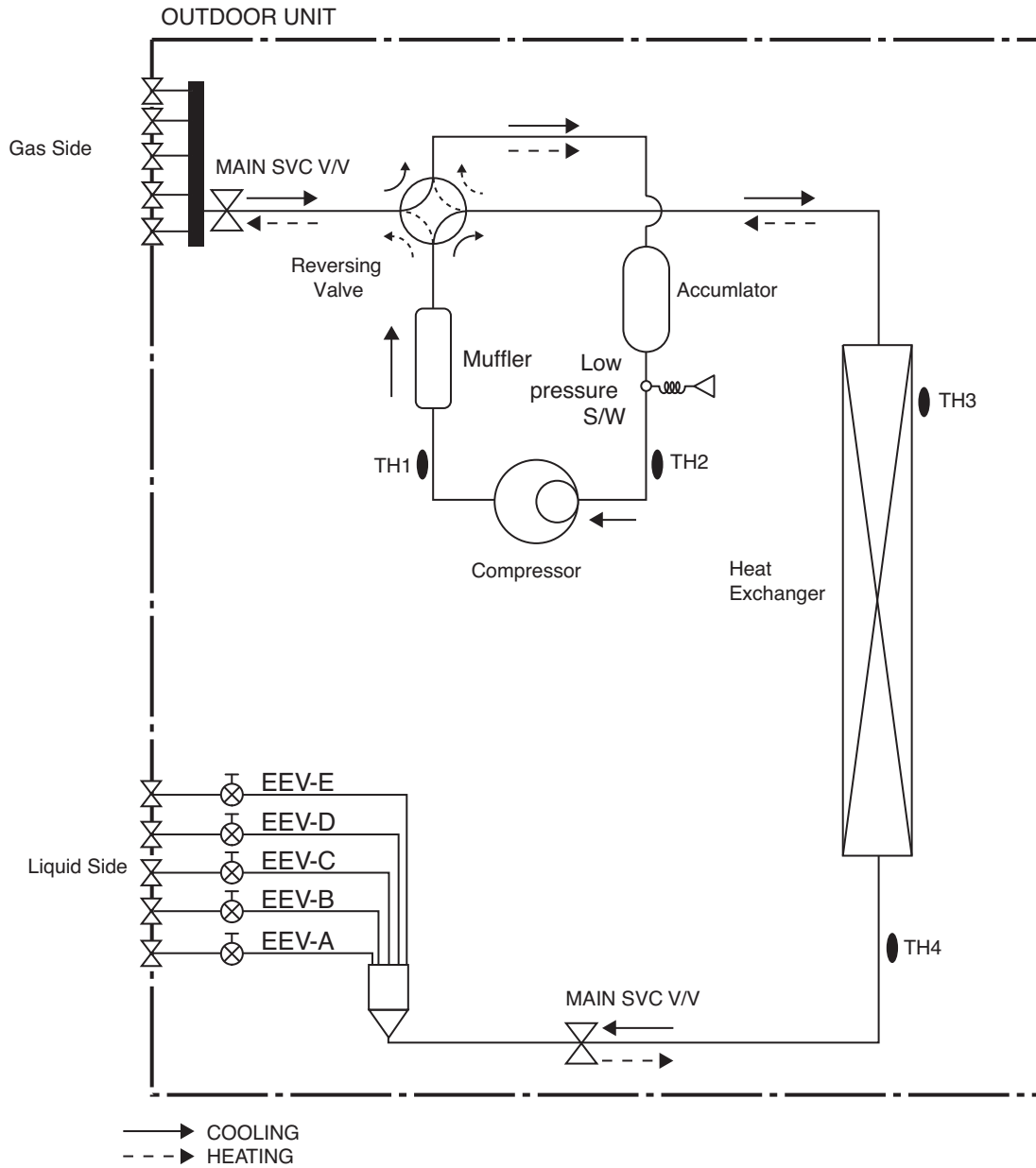
○ : Applied X : Not applied - : No relation

Option : Model name & price are different according to options, and assembled in factory with main unit.

Accessory : Installed at field, ordered and purchased separately by the corresponding model name, supplied with separate package

★ : These safty switcher are standard or optional features defending on region & country

### 3. Piping Diagrams



**Note:**

COMP: Compressor(Inverter)

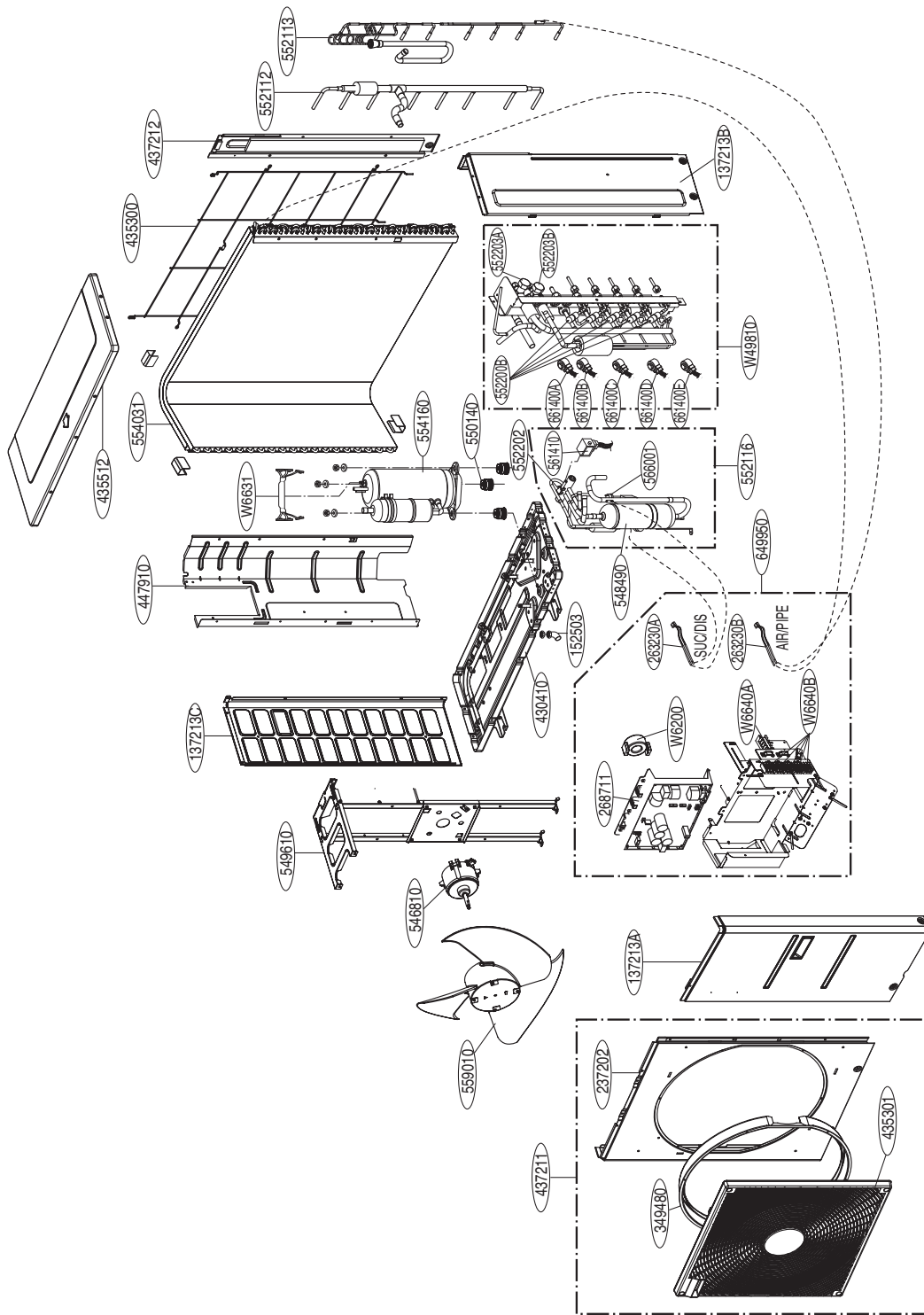
Acc: Accumulator

EEV: Electronic Expansion Valve

LOC.	Description	PCB Connector
Th1	Thermistor for discharge pipe temperature	CN_TH3
Th2	Thermistor for suction pipe temperature	CN_TH3
Th3	Thermistor for outdoor air temperature	CN_TH2
Th4	Thermistor for condensing temperature	CN_TH2



# 5. Exploded View



Model	Classification	Description	Part Number	Location Number	Remark
A5UW306FA5 UHXM90MA0[U40]	Inverter Heat/Pump	Compressor	TBZ35296001	554160	-
		Harness,Multi	EAD63768942	W6631	

**NOTE**

\* Please ensure GCSC since the replacement parts may be changed depending upon the buyer's request. Please check the correct parts in View RPL(Replacement Part List) on GCSC. (GCSC Website <http://biz.Lgservice.com>)



P/NO : MFL61921715

June, 2016